



MONTHLY MEMBERSHIP PROGRESS REPORT

District 324A2

Results as of: 02/28/2019

GMT: N S SANKAR

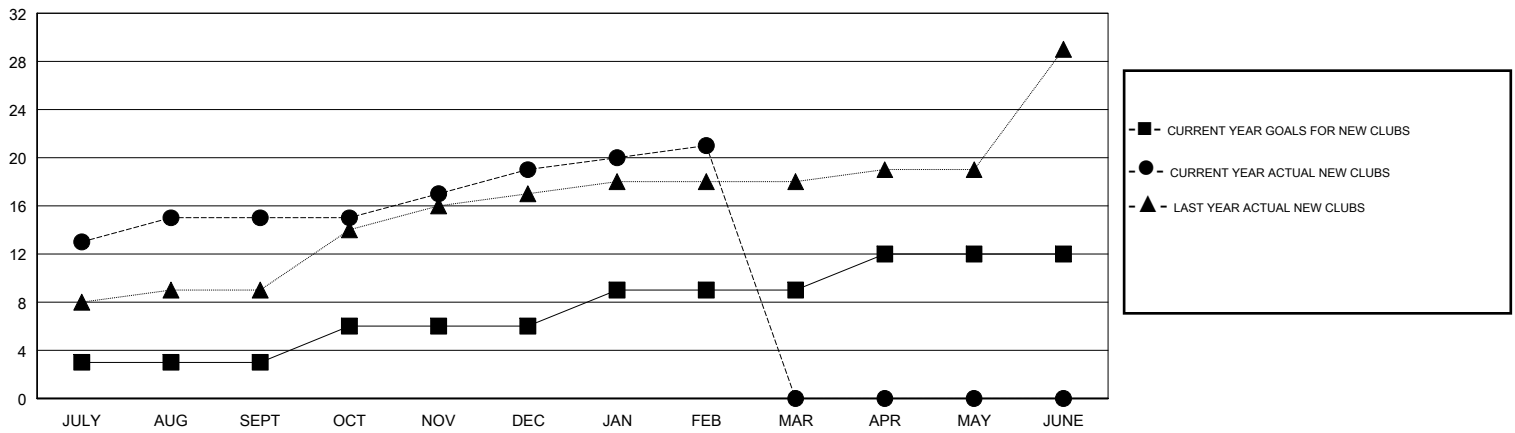
LOCATION INDIA

GMT CA

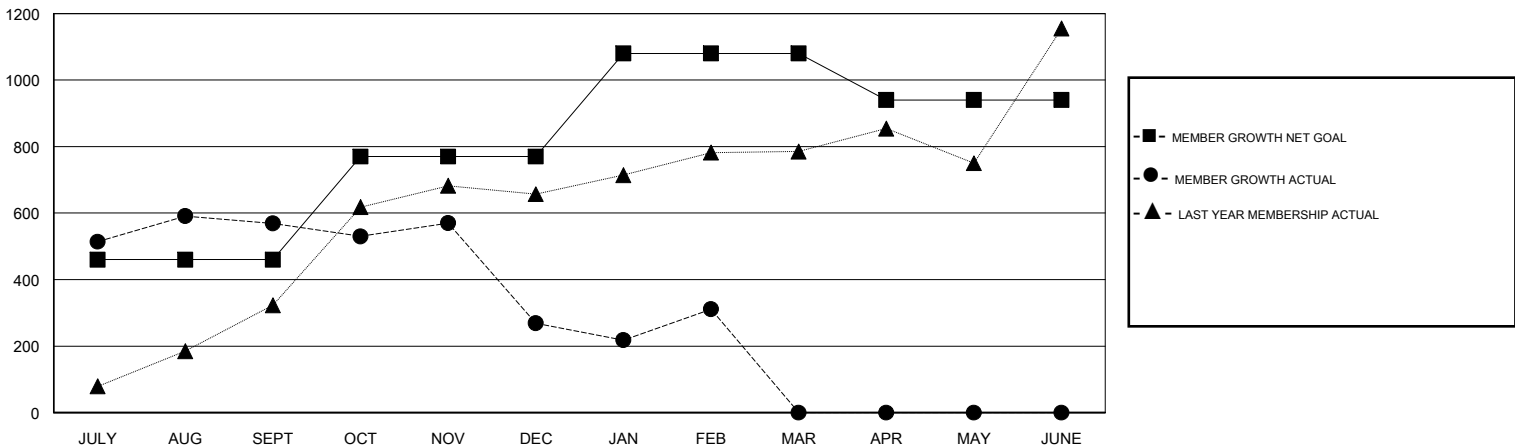
Clubs			
RESULTS FOR 2018-2019			
QUARTER	NEW CLUB GOAL	NEW CLUBS	DROPPED CLUBS
JULY/AUG/SEPT	3	15	1
OCT/NOV/DEC	3	4	9
JAN/FEB/MAR	3	2	4
APR/MAY/JUNE	3	0	0

Members			
RESULTS FOR 2018-2019			
QUARTER	MEMBER GROWTH NET GOAL	MEMBER GROWTH ACTUAL	DROPPED MEMBERS ACTUAL (including transfers)
JULY/AUG/SEPT	460	783	186
OCT/NOV/DEC	310	214	479
JAN/FEB/MAR	310	316	209
APR/MAY/JUNE	-140	0	0

GOALS AND ACTUAL NEW CLUBS CUMULATIVE



GOALS AND ACTUAL MEMBERS CUMULATIVE



DROPPED CLUBS: 14	129 CLUBS OF 224 ADDED 1 OR MORE NEW MEMBERS	<u>GENDER DISTRIBUTION</u> MALE 8,571 (90.13%) FEMALE 939 (9.87%) Women Percentage Fiscal Year Goal: 3%
<u>DROPPED MEMBERS</u> DECEASED 17 CLUB CANCELLED 352 OTHER 505 TOTAL 874	CLICK HERE FOR CUMULATIVE MEMBERSHIP DATA	TOTAL FAMILY UNIT MEMBERS 1,236 FAMILY MEMBERS PAYING HALF DUES 678